

ASYCUDA – HOW TO

Subject	How to clear SOClass Cache
Version	AW 4.3.1
Issue date	04/09/2018
File	How To Clear SOClass Cache



Objective :

The objective of this documentation is to assist the reader in locating the SOClass Cache folder and deleting it in order to clear the SOClass Cache. If the reader is experiencing problems launching, logging in, or performing functions within the ASYCUDA World application they must follow the steps within this documentation to clear the SOClass Cache.



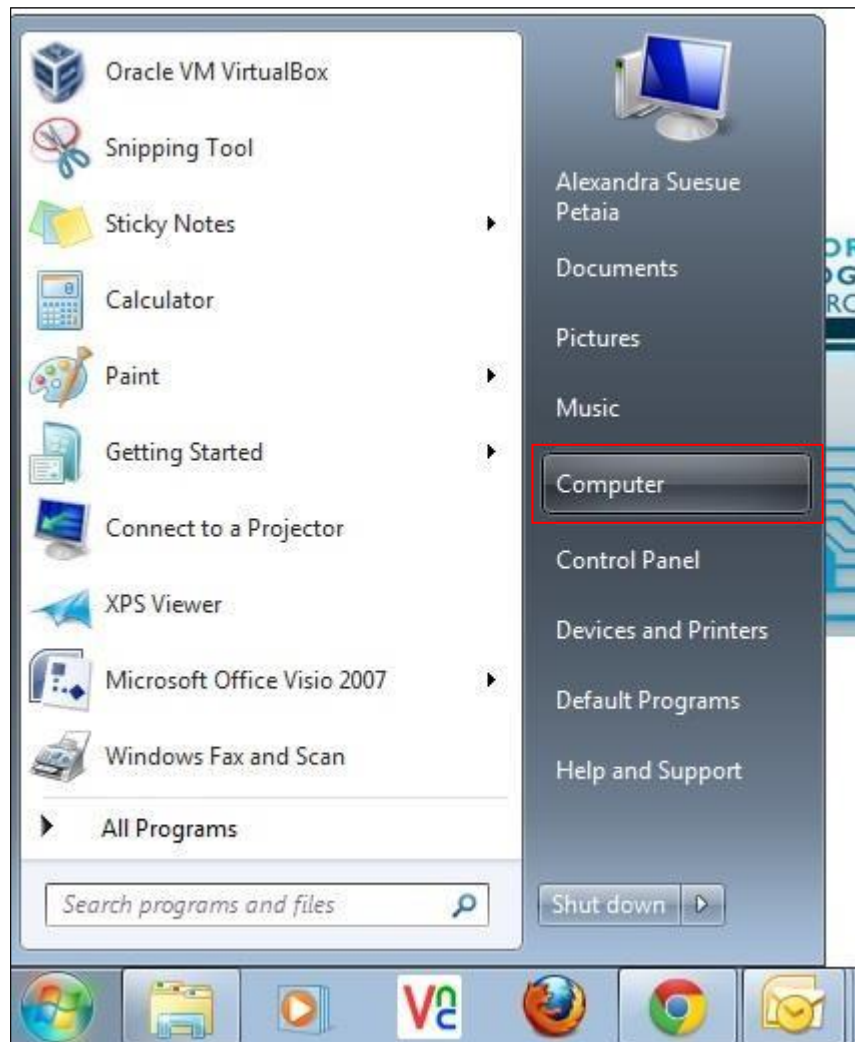
Related documentation :



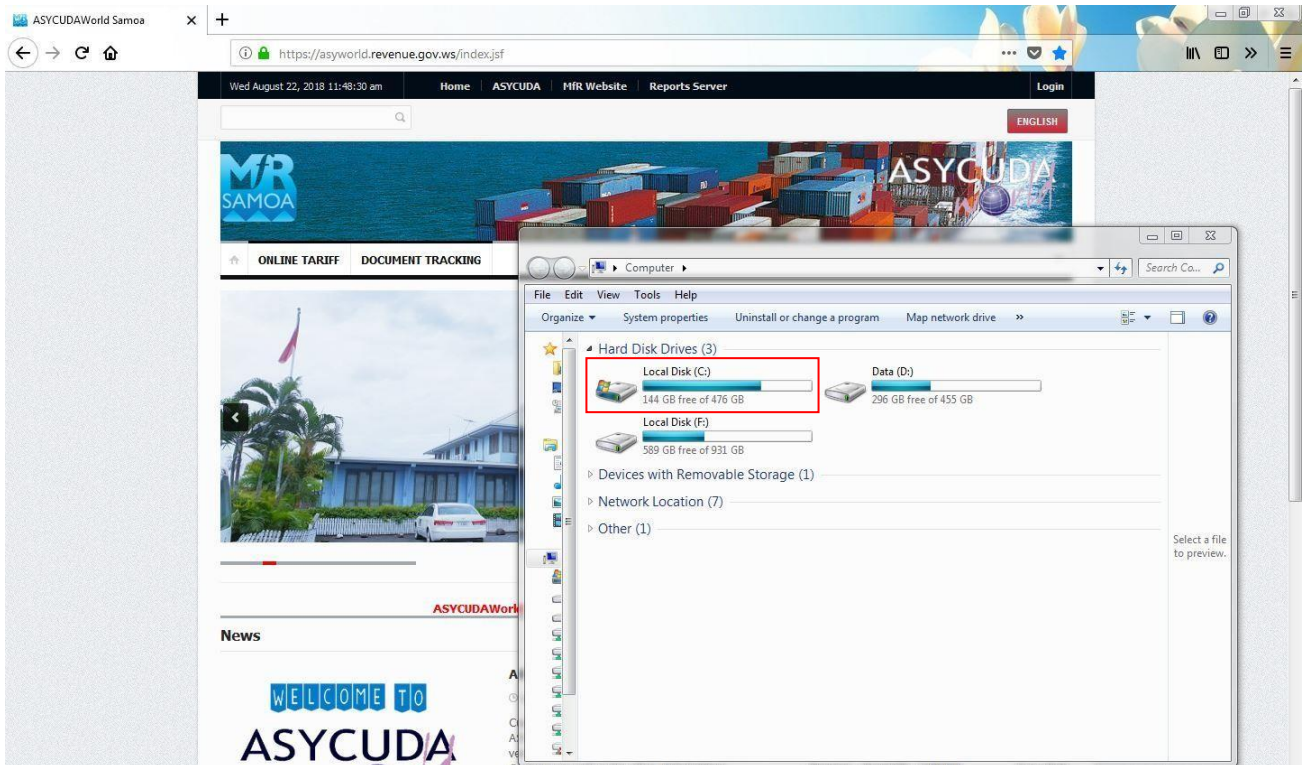
Keywords :

1. Locate and clear the SOClass Cache folder

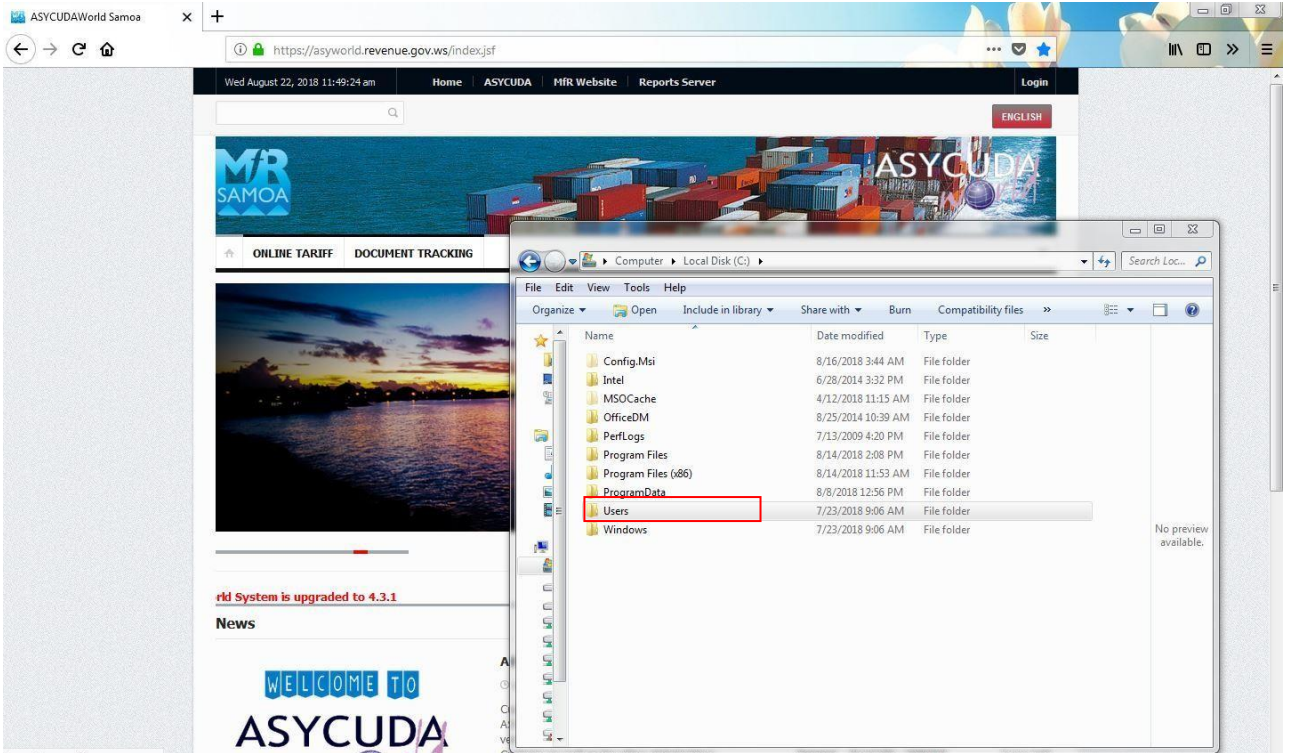
1.1. Go to Start > Computer



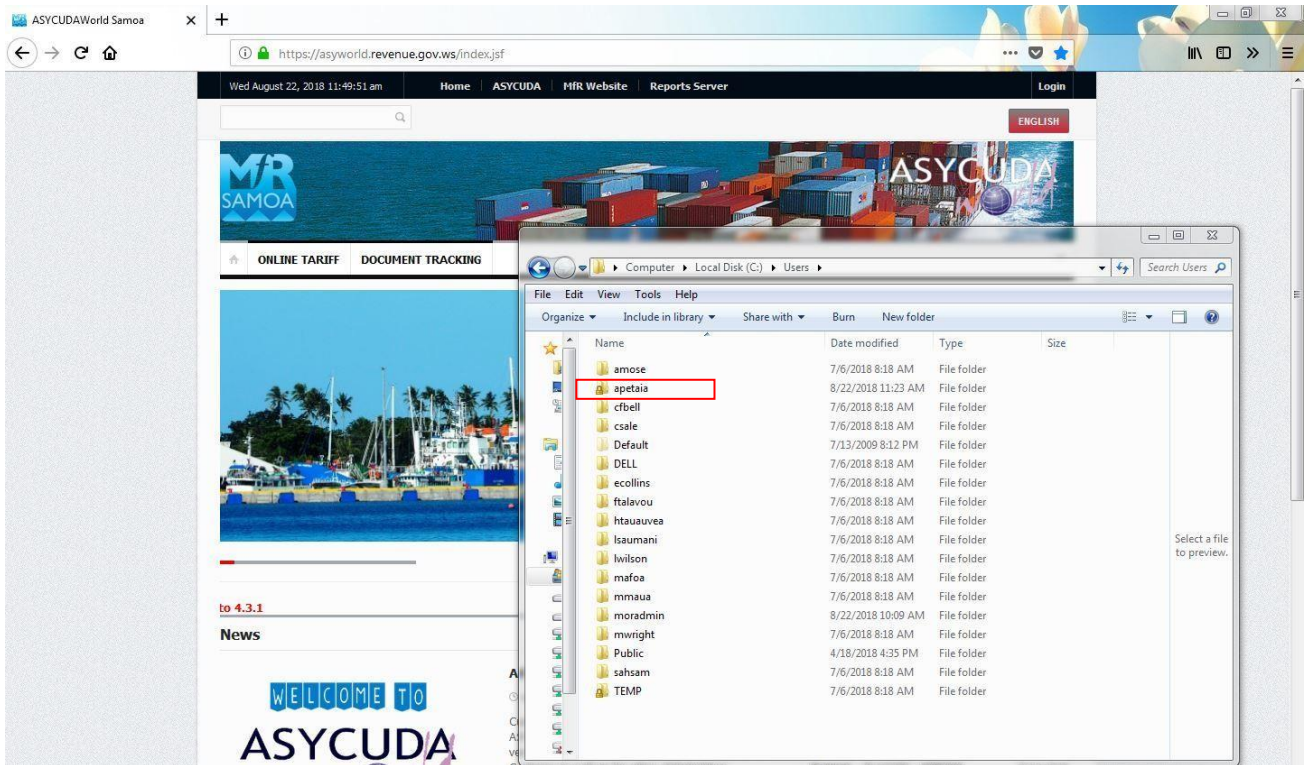
1.2. Once you are in the **Computer** window, open the **C: Drive** (as highlighted)



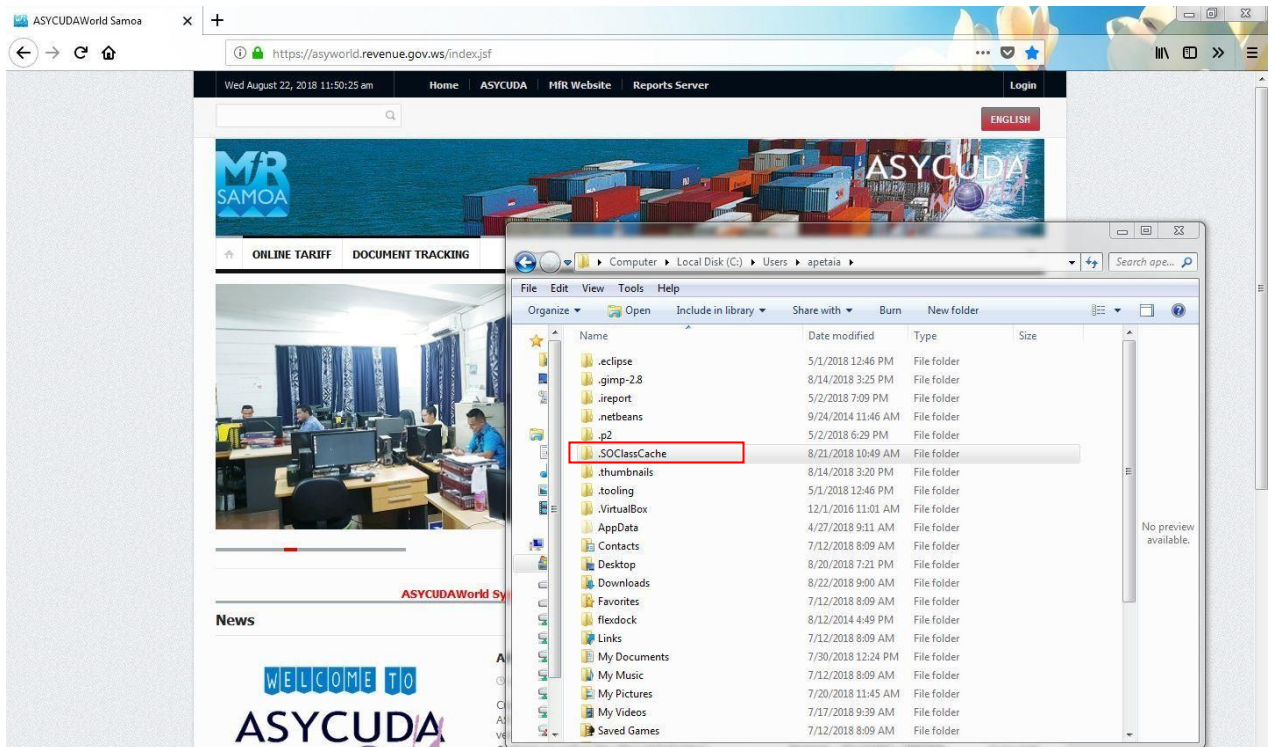
1.3. Open the Users folder



1.4. Select and open the folder that belongs to the current user that is logged in.



1.5. Right click on the **SOClass Cache** folder and select Delete



1.6. After successfully deleting this folder try logging in again.